



HOW TO

Check your fruit and vegetables for fruit fly

Follow our tips on the back of this flyer or visit fruitfly.sa.gov.au for more information about how to identify fruit fly in your fruit and vegetables.

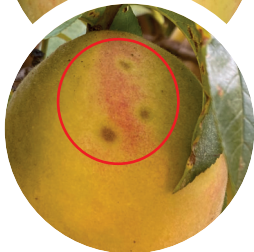


Follow us



**Government
of South Australia**

Department of Primary
Industries and Regions



*Top: Sting mark on an apple
Bottom: Multiple sting marks
on a peach*

1. Check ripening fruit and vegetables for sting marks, bruising or blemishes

In the weeks leading up to the ripening of fruit and vegetables, regularly check for sting marks, bruises or blemishes indicating it has been stung by a fruit fly.



Apple and peach cut open showing rot, internal discoloration, and fruit fly maggot infestation

2. Pick, cut open and check for rot and maggots

Check the inside of your fruit and vegetables by picking and cutting it open and checking for rot and internal discoloration. Look for tiny white maggots indicating it has been infected by fruit fly.



3. Seal and report any suspected fruit fly

If you find maggots or anything wriggling that you're not sure about, seal the fruit in a plastic bag or container and contact the Fruit Fly Hotline on 1300 666 010.

Find out more at

fruitfly.sa.gov.au

1300 666 010